



CATHOLIC EDUCATION
Archdiocese of Canberra & Goulburn

2025 - 2026

Enrolment Information



NSW Catholic schools



Welcome

Thank you for your interest in enrolling your child in Catholic Education in the Archdiocese of Canberra and Goulburn (CECG).

This document will assist you with this important decision. You can find more detailed information on individual school websites. Each school has an enrolment officer who is happy to help you with your enquiries, so please contact the school directly. A full contact list of our schools can be found [here](#).

For general enrolment information please contact the Catholic Education Office through enrolment@cg.catholic.edu.au.



CONTENTS

Why choose a Catholic school?	4
-------------------------------	---

Our 2024 outstanding record	5
-----------------------------	---

How to enrol	6
--------------	---

Key enrolment information	7
---------------------------	---

School fees and levies	8
------------------------	---

NSW school pathways	9
---------------------	---

NSW school's enrolment conditions	10
-----------------------------------	----

Students on a visa	11
--------------------	----

Supporting students with additional needs	11
---	----

Why choose a Catholic school?

Our schools are welcoming and supportive communities where students and their families feel a true sense of belonging. We embrace all who join us, offering every opportunity to thrive academically, socially, spiritually, and emotionally, guided by our dedicated teachers.

We warmly welcome families who support the ethos, values, and mission of Catholic education. We accept enrolment applications from families of all faith backgrounds seeking a Catholic education; for primary schools and early learning centres, we give priority to children who are baptised Catholic and living within the defined priority areas. Our secondary colleges give priority to students who are baptised Catholic and attending a Catholic primary school.

We provide families with a high-quality, Catholic education, with a strong commitment to Religious Education at the heart of all learning. This supports each student on their journey toward a meaningful, hope-filled, and flourishing life. Every day, our caring staff share faith and learning with students, leading by example and guiding them on their spiritual path.

Our schools embrace *Catalyst*, a practical, evidence-based teaching and learning strategy designed to support your child's academic success. By focusing on high-quality materials, engaging lessons, and ongoing assessment, we create an educational experience that caters to the needs of each student. Through *Catalyst*, we ensure that all students receive the best educational opportunities, preparing them for future success in a rapidly changing world. We are proud to offer an exceptional learning environment where faith and academic excellence go hand in hand.

Our 2024 outstanding record

NAPLAN¹

75% of CECG students achieved 'exceeding' or 'strong' proficiency levels in **Reading** compared to 67% nationally



76% of CECG students achieved 'exceeding' or 'strong' proficiency levels in **Writing** compared to 68% nationally



75% of CECG students achieved exceeding or 'strong' proficiency levels in **Numeracy** compared to 65% nationally



ATAR²

On average CECG Year 12 students ranked within the top

25% of ATAR results



85% achieved an ATAR result **above 60**

34% achieved an ATAR result **above 80**

¹The National Assessment Program – Literacy and Numeracy (NAPLAN) assessments happen every year. Students in Years 3, 5, 7 and 9 are tested on the fundamental literacy and numeracy skills that every child needs to become successful learners in school and beyond.

² The Australian Tertiary Admission Rank (ATAR) provides an indication of the overall position of a student in relation to the student body for that year.





How to enrol



You can apply to NSW schools at any time during the year subject to the school's available capacity. Some schools follow a standard enrolment period which is usually during May. We encourage families to apply during May to June for the following year, as capacity is limited.

Schools host information sessions, school tours and introductory activities. Refer to their individual websites for dates and events.

You should apply to enrol online via each school's website, or if you are new to the area, or still undecided, please send an email to enrolment@cg.catholic.edu.au and one of our helpful enrolment team will be happy to contact you.

Key enrolment information

A copy of the full CECG enrolment policy can be found [here](#).

		Primary schools	Secondary schools
Minimum age in the year of commencement*		Five years old by 31 July	N/A
Required documents	Student identification - birth certificate (not commemorative) or passport	✓	✓
	Immunisation records		
	Medicare number		
	Previous school reports, other than kindergarten		✓
Additional information (if applicable)	For students born outside Australia - visa grant notice for permanent and temporary visa holders - for both student and parent(s) and legal guardian(s)	✓	✓
	For Catholic families - certificate of baptism		
	For students with additional needs - any medical reports or other additional learning needs assessment reports		
	Family law, personal protection order, or other relevant court orders, if applicable		

* It is a government requirement that children be enrolled in formal schooling by the age of 6 years.

Note - application fee(s)

St Gregory's Primary School in Queanbeyan, charges a \$50 non-refundable fee, per application.

Trinity Catholic College in Goulburn charges a \$55 non-refundable fee, per application.



School fees and levies

Information regarding school fees can be found on individual school websites, or by contacting the school directly.

The Archdiocesan Catholic school system welcomes, accepts, and supports those who are poor, marginalised and in most need. Our conviction is that no student will be refused enrolment or be disadvantaged because of an inability on the part of parents, or carers, to meet financial requirements.

Our schools offer fee concessions in cases of financial hardship. Parents or carers, who wish to seek a school fee reduction should approach the school Principal or business manager. Early learning Centre Directors may be able to seek short term support for fees in particular circumstances. Please contact the ELC Director if required. All enquiries are treated in the strictest confidence.

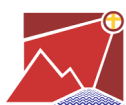
NSW school pathways

Our NSW schools are co-educational and there are several pathways for students from Kindergarten through to Year 12:

Primary schools (K-6)

All NSW Catholic primary schools

Kindergarten to Year 12



Lumen Christi Catholic
College, Pambula Beach



St Anne's Catholic College,
Temora



McAuley Catholic College,
Tumut

Secondary schools

Kindergarten to **Year 10** at:



St Patrick's Parish School,
Cooma



Sacred Heart Central
School, Cootamundra

Years 7 to 12 at:



Carroll College, Broulee



Hennessy Catholic College,
Young



Trinity Catholic College,
Goulburn

A school list including contact details can be found [here](#).





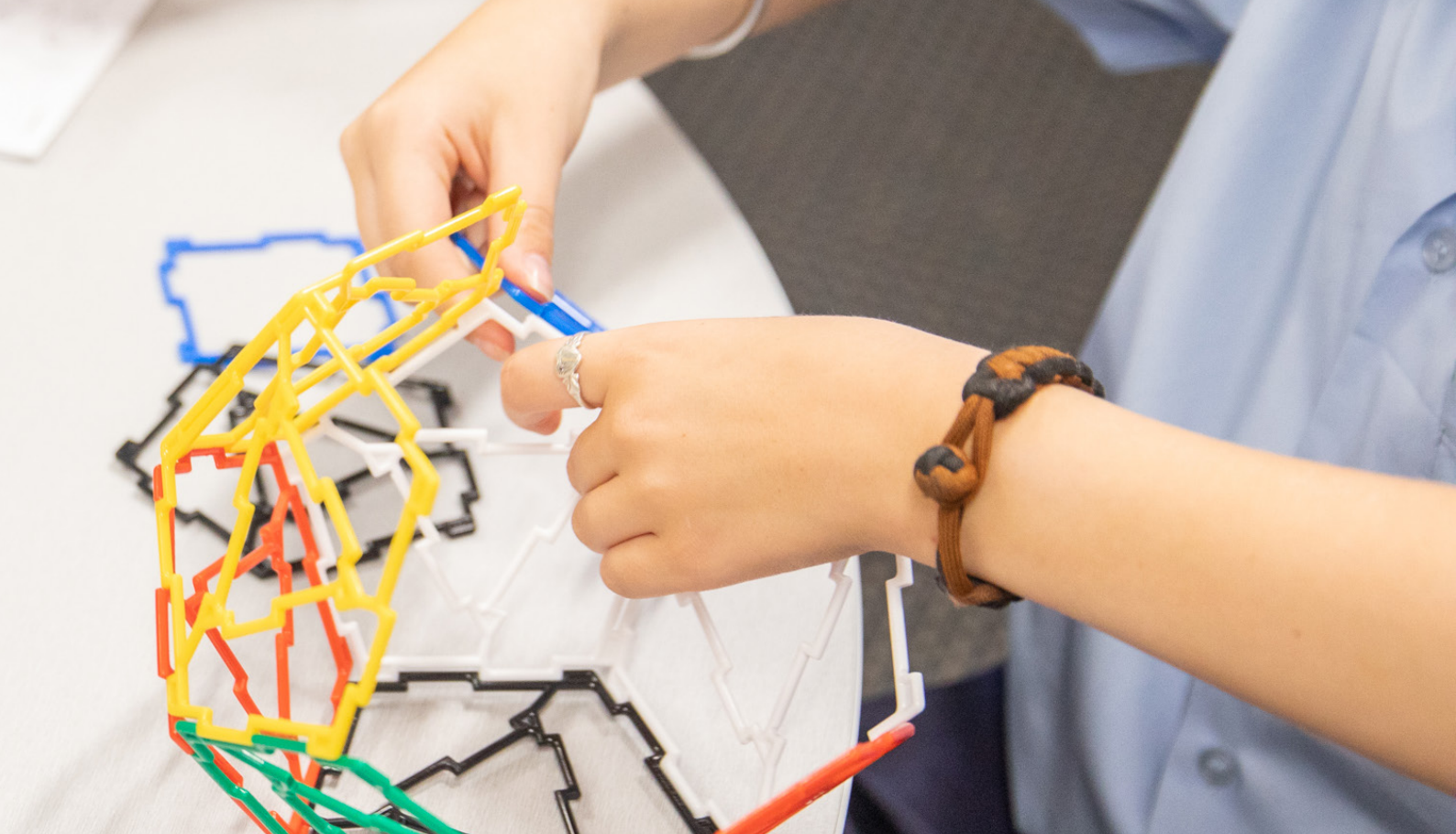
NSW school's enrolment conditions

Primary students residing in Yass are zoned to Mt Carmel School, Yass.

Students who reside in Yass can enrol in ACT CECG secondary schools from Year 7 onwards.

Students residing in Murrumbateman have a choice of enrolment at either Mt Carmel School, Yass or an ACT Archdiocesan Catholic school subject to normal enrolment processes and priorities. If you choose Mt Carmel School this decision is fixed until Year 7.

Students who reside in NSW served by Archdiocesan secondary schools are welcome to enrol in an ACT Archdiocesan college starting from Year 11.



Supporting students with additional needs

CECG welcomes all students and schools will provide adjustments to teaching, learning and assessment for students with additional needs.

We encourage parents and carers of students with additional needs to discuss their individual situation with the school Principal, as part of their child's enrolment to ensure a successful transition as they start in their new school.

Students on a visa

Students who do not have Australian citizenship or a permanent residence visa are classified as an overseas student. Students on temporary visas may have different fee eligibility. Contact the enrolment officer at the school directly for fee information or send an email to our team at enrolment@cg.catholic.edu.au.





CATHOLIC EDUCATION

Archdiocese of Canberra & Goulburn

Catholic Archdiocese of Canberra and Goulburn Education Limited | ABN 60 675 797 734